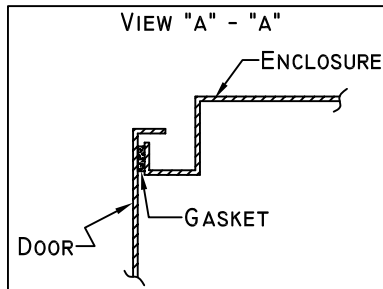
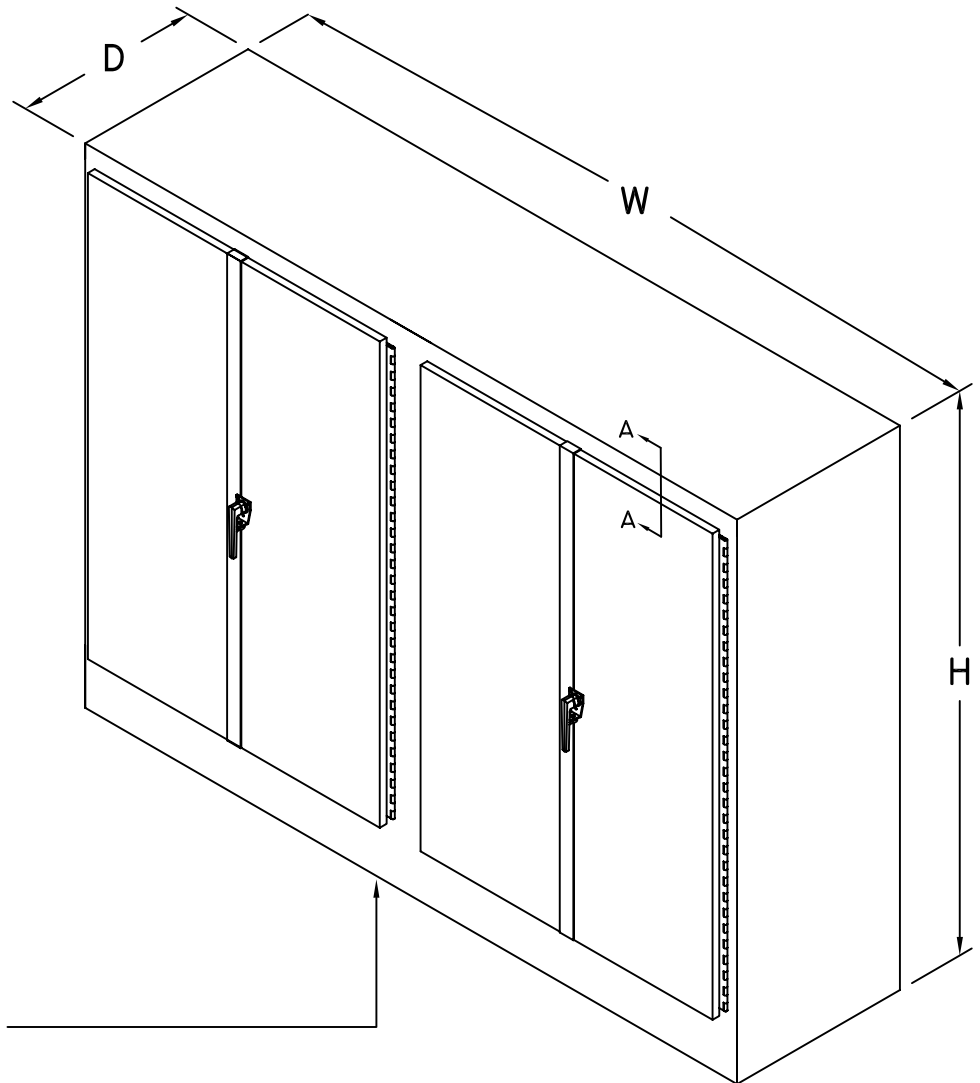


Technical Specification



LIFTING EYES AVAILABLE
UPON REQUEST

OPEN BOTTOM
3" MOUNTING FLANGE
5/8" MOUNTING HOLES



NEMA 3R FREESTANDING EXTERIOR ENCLOSURE

- ☐ FREESTANDING ENCLOSURES ARE CONSTRUCTED WITH ALL WELDED SEAMS. MATERIAL IS GALVANEAELED SHEET STEEL, CONFORMING WITH ASTM A653.
- ☐ SINGLE OR DOUBLE DOORS PROVIDED WITH CONTINUOUS PIANO HINGES. 3-POINT LATCHING MECHANISM SUPPLIED WITH EITHER PADLOCK OR KEYLOCK HANDLE.
- ☐ TOTAL CUSTOM CAPABILITY ALLOWS US TO MEET A WIDE RANGE OF CUSTOMER NEEDS. WE CAN SUPPLY SPECIAL SIZES, SHAPES, HOLES, OR CUTOUTS.
- ☐ FREESTANDING ENCLOSURES ARE CONSTRUCTED IN ACCORDANCE WITH UL BULLETIN #50 AND NEMA 3R SPECIFICATIONS.

DWG. TITLE: NEMA 3R
Freestanding Exterior Enclosure

DWG. NO.: P10009

MATERIAL: ASTM A653 Galvanealed

FINISH: Galvannealed - Painted

NOTICE:
THIS INFORMATION IS THE PROPERTY OF N.J. SULLIVAN CO., ANY REPRODUCTION, PUBLICATION OR DISTRIBUTION TO A THIRD PARTY IS STRICTLY FORBIDDEN UNLESS WRITTEN PERMISSIONS ARE GIVEN BY AN AUTHORIZED AGENT OF:
N.J. SULLIVAN CO., INC.

DFTG.:	DATE:
CHKR.:	DATE:
REV.:	DATE:
REV.:	DATE:
REV.:	DATE:

N.J.
SULLIVAN Co.

INCORPORATED
P.O. BOX 438, STERLING, VIRGINIA 20167
METAL FABRICATION

Phone: (703)-464-5944 Fax: (703)-464-5992
www.njsullivan.com