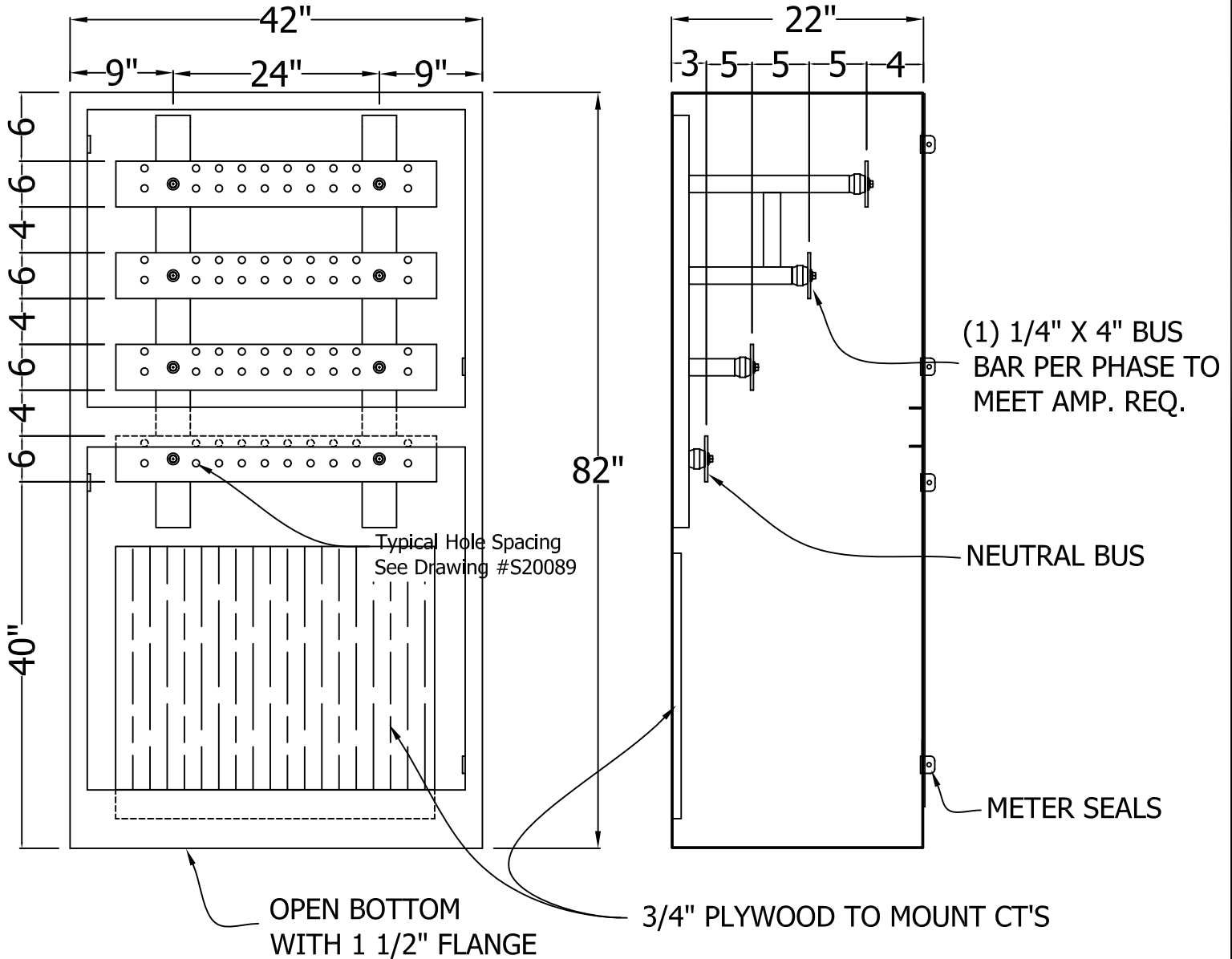


TECHNICAL SPECIFICATIONS



FRONT VIEW

(SHOWN WITH COVERS REMOVED)

SIDE VIEW

(SHOWN WITH COVERS IN PLACE)

(FOR ADDITIONAL INFORMATION SEE DRAWING #S20089.)

DWG. TITLE: SMECO C/T BUSBAR CABINET FOR SERVICE
CABLE TERMINATION 400 - 1000 Amp

DWG. NO.:
S20086

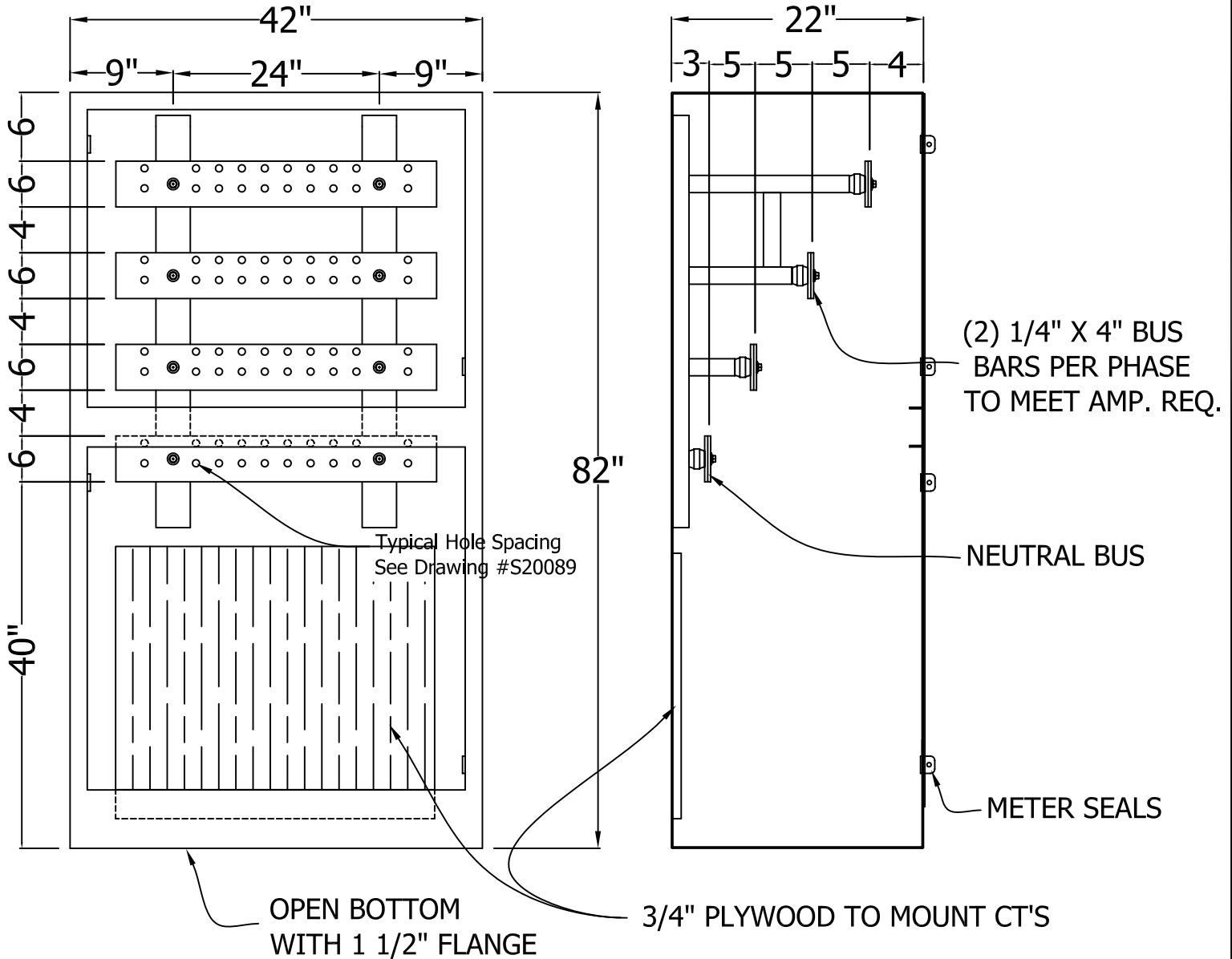
PART NO.:
SMCTB101/3

DATE:
6/30/10



N.J. SULLIVAN CO., INC.
P.O. BOX 438, STERLING, VIRGINIA 20167
Phone: (703)-464-5944 Fax: (703)-464-5992
www.njsullivan.com

TECHNICAL SPECIFICATIONS



FRONT VIEW

(SHOWN WITH COVERS REMOVED)

SIDE VIEW

(SHOWN WITH COVERS IN PLACE)

(FOR ADDITIONAL INFORMATION SEE DRAWING #S20089.)

DWG. TITLE: SMECO C/T BUSBAR CABINET FOR SERVICE
CABLE TERMINATION 1001 - 2000 Amp

DWG. NO.:
S20087

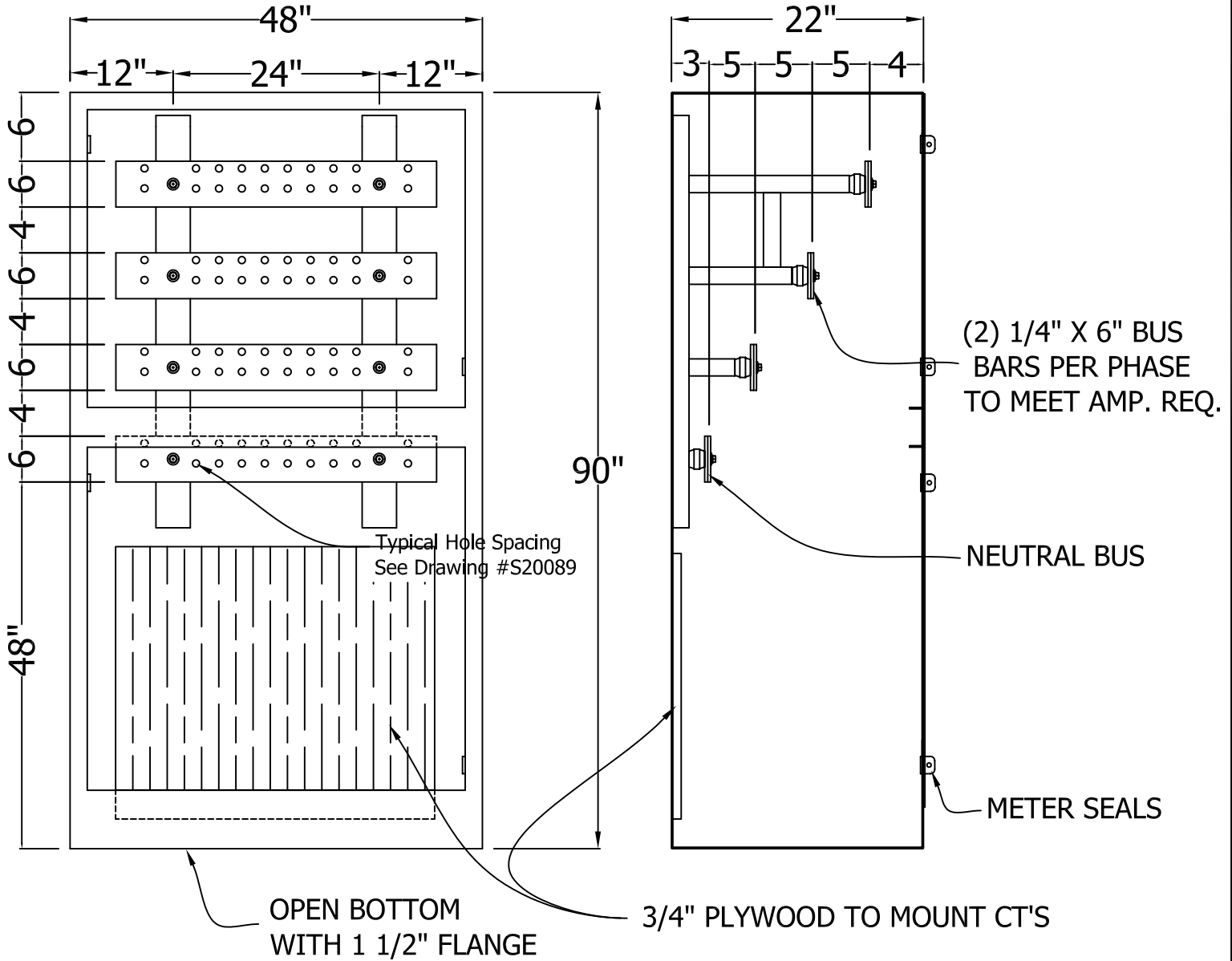
PART NO.:
SMCTB201/3

DATE:
6/30/10



N.J. SULLIVAN CO., INC.
P.O. BOX 438, STERLING, VIRGINIA 20167
Phone: (703)-464-5944 Fax: (703)-464-5992
www.njsullivan.com

TECHNICAL SPECIFICATIONS



FRONT VIEW

(SHOWN WITH COVERS REMOVED)

SIDE VIEW

(SHOWN WITH COVERS IN PLACE)

(FOR ADDITIONAL INFORMATION SEE DRAWING #S20089.)

DWG. TITLE: SMECO C/T BUSBAR CABINET FOR SERVICE
CABLE TERMINATION 2001 - 3000 Amp

DWG. NO.:
S20088

PART NO.:
SMCTB301/3

DATE:
6/30/10



N.J. SULLIVAN CO., INC.
P.O. BOX 438, STERLING, VIRGINIA 20167
Phone: (703)-464-5944 Fax: (703)-464-5992
www.njsullivan.com

Technical Specification

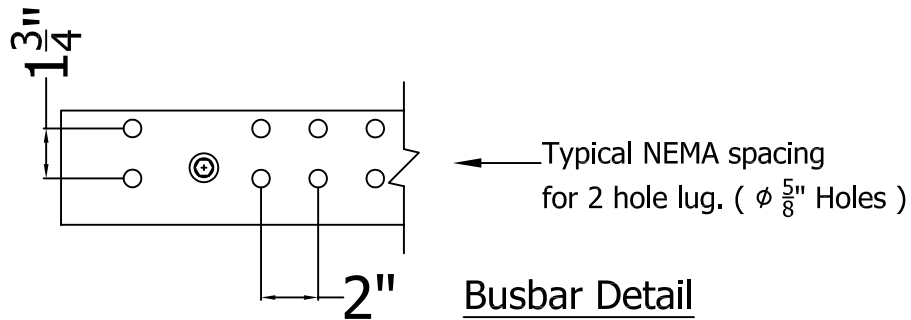
1 - CABINET FABRICATION IS A WELDED CONSTRUCTION IN ACCORDANCE WITH NEMA 1 AND 3R SPECIFICATIONS. MATERIAL IS 12 GAUGE G-90 GRADE GALVANIZED STEEL IN ACCORDANCE WITH ASTM A924. ALL JOINTS AND SEAMS ARE WELDED THEN REFINISHED WITH GALVANIC COATING TO PRESERVE FINISH.

2 - BUSSBARS ARE FABRICATED FROM SILVER PLATED C110 ELECTROLYTIC TOUGH PITCH COPPER CONFORMING TO ASTM B133, AND B187. ELECTRICAL CONDUCTIVITY IS 101% IACS. BUSS BARS ARE PUNCHED TO ACCOMODATE STANDARD 2 HOLE HIGH-PRESS LUGS.

3 - ALL STANDOFF INSULATORS ARE MOLDED OF UL RECOGNIZED FLAME RESISTANT FIBERGLASS-REINFORCED THERMOSET POLYESTER MOLDING COMPOUND WITH THREADED INSERTS AT EACH END. UL RECOGNIZED ACCORDING TO UL STANDARD FOR SAFETY 891.

4 - BUSBAR SUPPORT BRACKETS CONSTRUCTED OF 3" STEEL "C" CHANNEL AND 1½" SQ. TUBING CONFORMING TO ASTM A36.

5 - ALL HARDWARE USED FOR FABRICATION IS PLATED STEEL.



PART NUMBER	USAGE	AMPERAGE RATING	CABINET DIMENSIONS			BUS BAR SIZE
			HEIGHT	WIDTH	DEPTH	
SMCTB101	INDOOR	400 - 1000	82"	42"	22"	(1) 1/4" x 4"
SMCTB103	OUTDOOR					
SMCTB201	INDOOR	1001 - 2000	82"	42"	22"	(2) 1/4" x 4"
SMCTB203	OUTDOOR					
SMCTB301	INDOOR	2001 - 3000	90"	48"	22"	(2) 1/4" x 6"
SMCTB303	OUTDOOR					

DWG. TITLE:

SMECO C/T BUSBAR CABINET FOR SERVICE CABLE TERMINATION

DWG. NO.:

P10089

DATE:



N.J. SULLIVAN CO., INC.
P.O. BOX 438, STERLING, VIRGINIA 20167
Phone: (703)-464-5944 Fax: (703)-464-5992
www.njsullivan.com