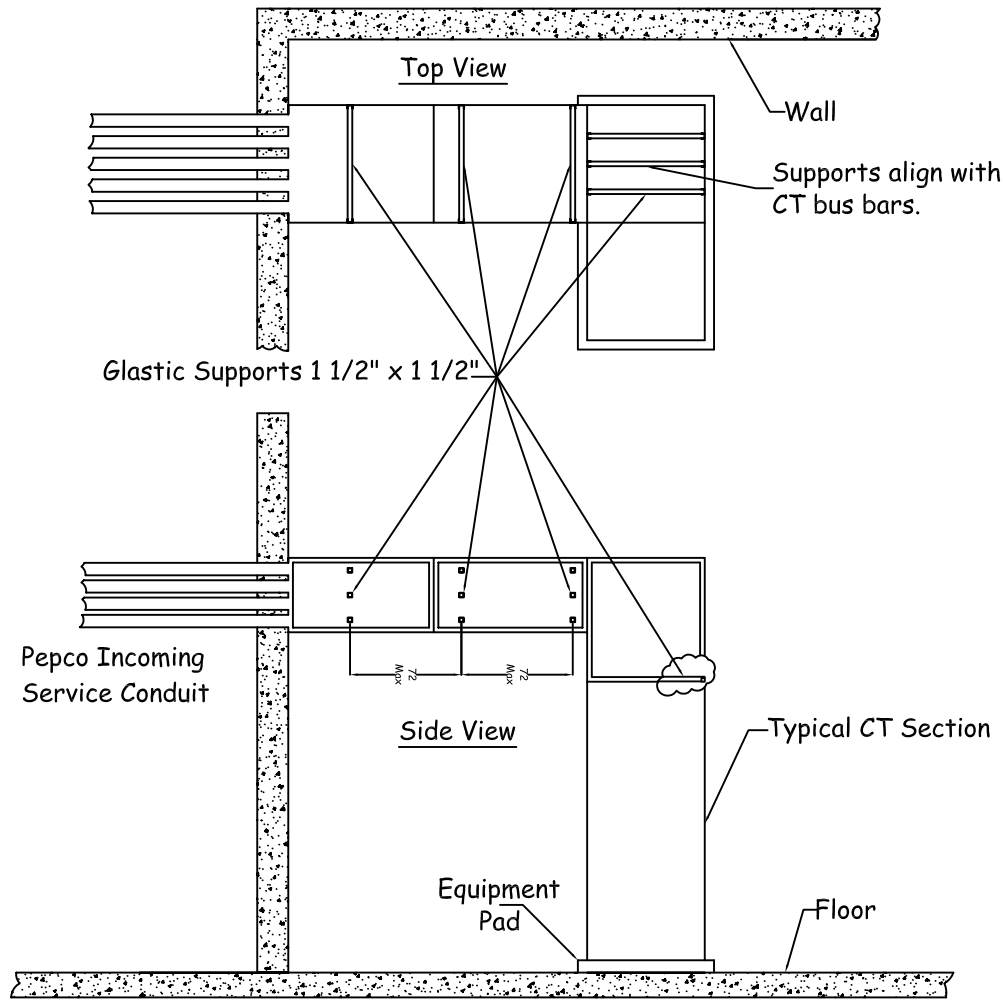


# Technical Specification



Typical Pepco Service Entrance Trough Construction

- ❑ Service entrance trough is constructed with all welded seams. Material is 12ga. galvanealed sheet steel, ASTM A653, painted grey.
- ❑ Service entrance trough is provided with removable access covers and utility seal tabs. Covers will be sized to be safely handled by one person. Glastic cable supports will be placed at 36" (max) intervals.
- ❑ Total custom capability allows us to meet a wide range of customer needs. We can supply special sizes, shapes, holes, or cutouts.
- ❑ Service entrance trough is constructed in accordance with UL and NEMA 1 specifications.

DWG. TITLE: Typical Pepco Service Entrance Trough Construction

DWG. NO.: P10028

MATERIAL: ASTM A 653 Galvanealed

FINISH: Galvanealed - Painted Grey

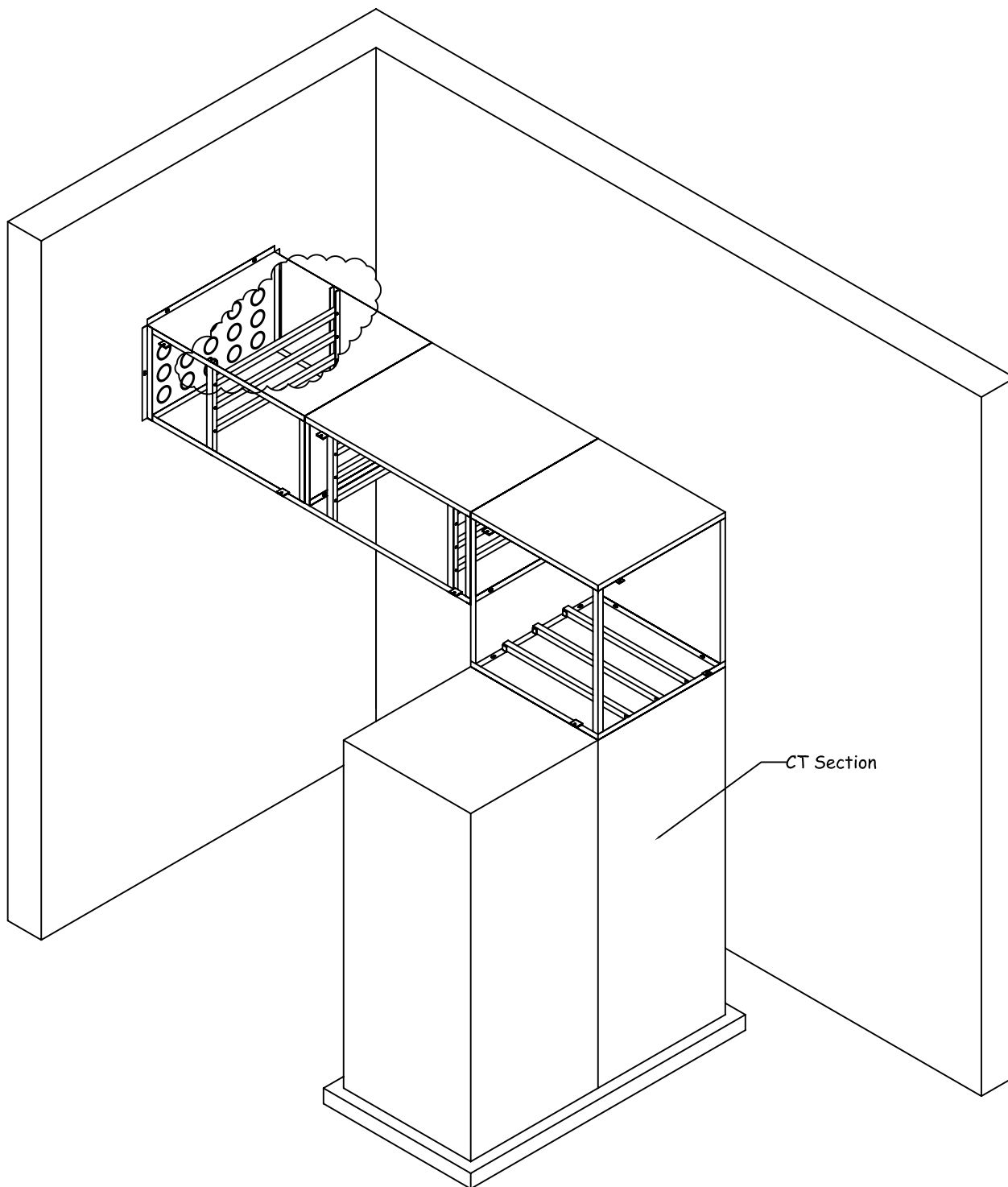
NOTICE:  
THIS INFORMATION IS THE PROPERTY OF N.J. SULLIVAN CO., ANY REPRODUCTION, PUBLICATION OR DISTRIBUTION TO A THIRD PARTY IS STRICTLY FORBIDDEN UNLESS WRITTEN PERMISSIONS ARE GIVEN BY AN AUTHORIZED AGENT OF:  
N.J. SULLIVAN CO., INC.

DFTG.:	BB	DATE:	11/15/01
CHKR.:		DATE:	
REV.:		DATE:	
REV.:		DATE:	
REV.:		DATE:	

**N.J.**  
**SULLIVAN Co.**

INCORPORATED  
P.O. BOX 438, STERLING, VIRGINIA 20167  
METAL FABRICATION  
Phone: (703)-464-5994 Fax: (703)-464-5992  
www.njsullivan.com

# Technical Specification



DWG. TITLE:	Typical Pepco Service Entrance Trough Construction
DWG. NO.:	P10029
MATERIAL:	ASTM A924 Galvanized ASTM A653 Galvanealed
FINISH:	Galvanized - None Galvanealed - Customer to specify

NOTICE:  
THIS INFORMATION IS THE PROPERTY OF N.J. SULLIVAN CO., ANY REPRODUCTION, PUBLICATION OR DISTRIBUTION TO A THIRD PARTY IS STRICTLY FORBIDDEN UNLESS WRITTEN PERMISSIONS ARE GIVEN BY AN AUTHORIZED AGENT OF:  
N.J. SULLIVAN CO., INC.

DFTG.:	BB	DATE:	11/15/01
CHKR.:		DATE:	
REV.:		DATE:	
REV.:		DATE:	
REV.:		DATE:	

**N.J.**  
**SULLIVAN Co.**  
INCORPORATED  
P.O. BOX 438, STERLING, VIRGINIA 20167  
METAL FABRICATION  
Phone: (703)-464-5994 Fax: (703)-464-5992  
www.njsullivan.com