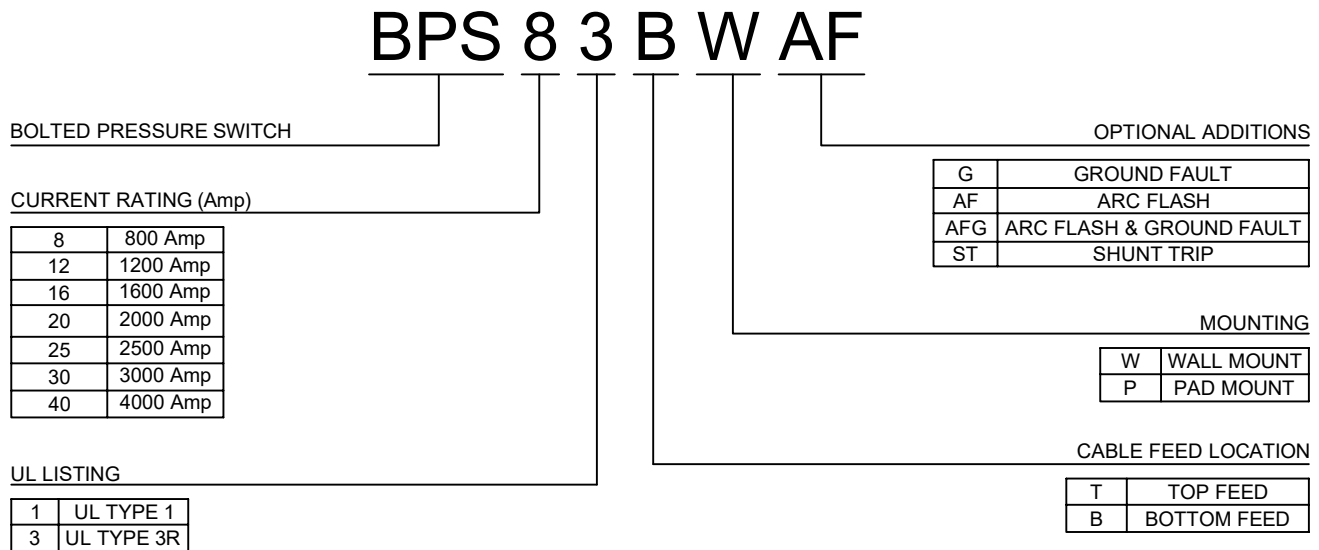


# Bolted Pressure Switch 800-4000 Amp - Spec Sheet

## NOTES FOR BOLTED PRESSURE SWITCHES:

- 1. Applications:** Particularly recommended for use in service entrance switch gear, and/or where there may be high available fault current. All Boltswitches are designed to use class 'L' fuses (fuses are not supplied).
- 2. Features:** 200,000 ampere fault current ratings; bolted pressure contacts; load break design; quick-make / quick-break operators; visible contacts; silver plated copper current carrying parts; grid type arc chutes; interpole barriers; terminals designed for lugs or busbars; provisions for up to four padlocks.
- 3. All 800 - 4000 Ampere Switches:** Have been tested in accordance with UL-977 and are UL listed as 'fused power circuit devices' under file number E44498.
- 4. Cabinet Design:** Cabinets are designed to meet the requirements of Underwriters Laboratories, (UL) #50 and #508. Canadian Standards Association C22.2 No. 94 and the National Electrical Manufacturers Association (NEMA) Type 1, Indoor Use, (Enclosures intended for indoor use, primarily to provide a degree of protection against contact with the enclosed equipment or locations where unusual service conditions do not exist); and NEMA Type 3, Outdoor Use, (Enclosures intended for outdoor use, primarily to provide protection against windblown dust, rain and sleet, and undamaged by the formation of ice on the enclosure).
- 5. Cabinet Layout:** Cabinets can be custom furnished with any type of cutout / knockout that may be required; i.e. trough, wireways, conduit etc. per customers request.
- 6. Part Numbers:** Bolted Pressure Switches adhere to a standardized part number/naming convention (Example: BPS83B WAF). See chart below:



This chart represents the most common models, equipped with 3 poles and 4 wires. There are many other models available, please contact us for configurations not shown here.

Other options include the addition of a shunt trip operator, key interlock provisions, motorized manual operator or motorized shunt trip operator.

For Boltswitch specifications, visit <http://www.boltswitch.com/products.html>. Specifications found in the Outline Drawings pull down section.

DWG. TITLE: BOLT SWITCH  
Series VLB & SLB  
800 - 4000 Amp Rated

DWG. NO: BPS PN KEY

MATERIAL: 12 Ga. ASTM A653 Galvannealed - G60U

FINISH: Powder Coated ANSI 61

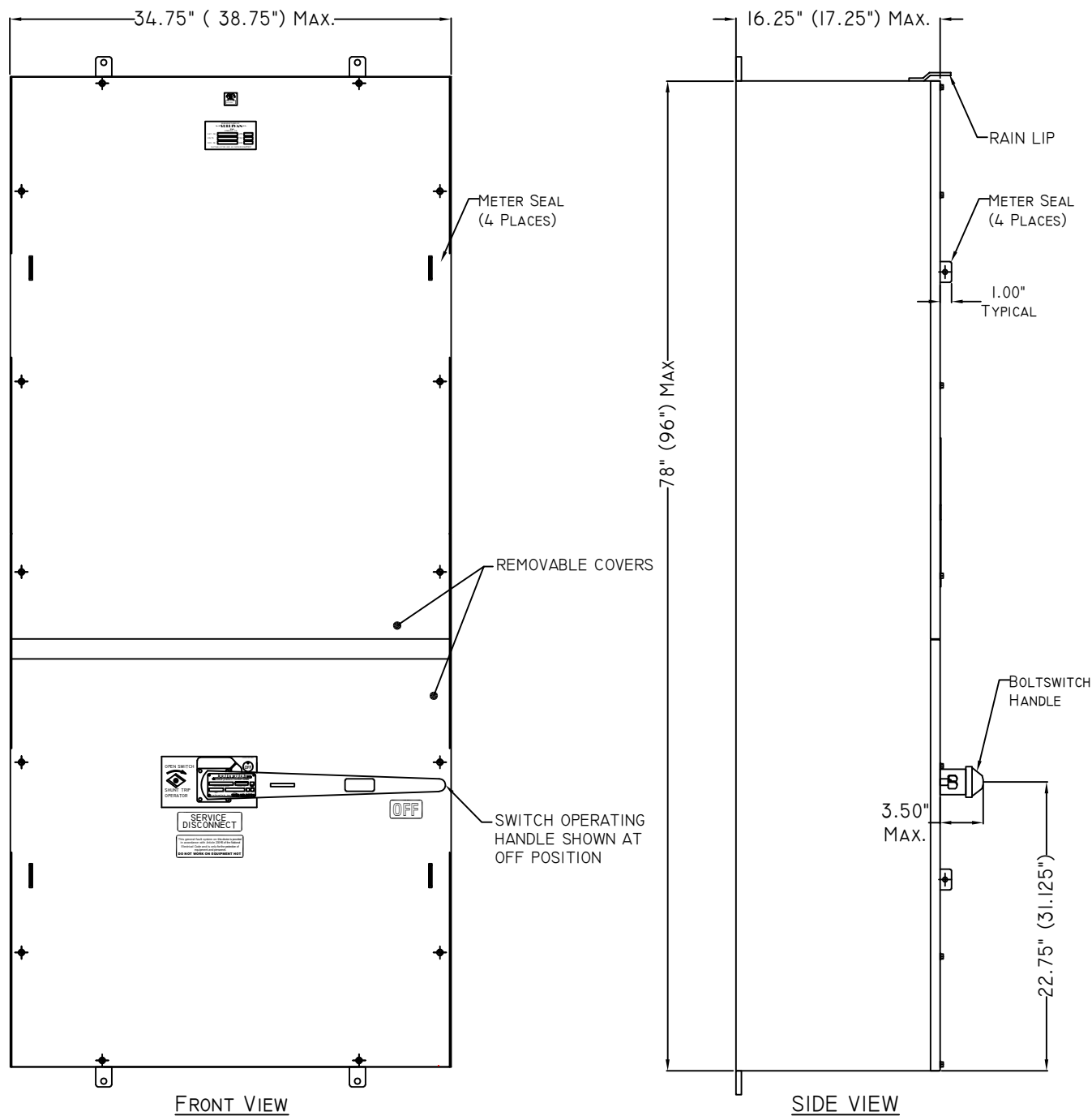
NOTICE:  
THIS INFORMATION IS THE PROPERTY OF N.J. SULLIVAN CO., ANY REPRODUCTION, PUBLICATION OR DISTRIBUTION TO A THIRD PARTY IS STRICTLY FORBIDDEN UNLESS WRITTEN PERMISSIONS ARE GIVEN BY AN AUTHORIZED AGENT OF:  
N.J. SULLIVAN CO., INC.

DFTG.:	CD	DATE:	10/07/10
CHKR.:		DATE:	
REV.:	DB	DATE:	04/04/23
REV.:		DATE:	
REV.:		DATE:	



P.O. BOX 438, STERLING, VIRGINIA 20167  
METAL FABRICATION  
Phone: (703)-464-5944 Fax: (703)-464-5992  
[www.njsullivan.com](http://www.njsullivan.com)

# Bolted Pressure Switch 800-4000 Amp - UL Type 3R Wall Mounted Cover Bottom Feed



(4000 Amp Dimensions in Parenthesis)

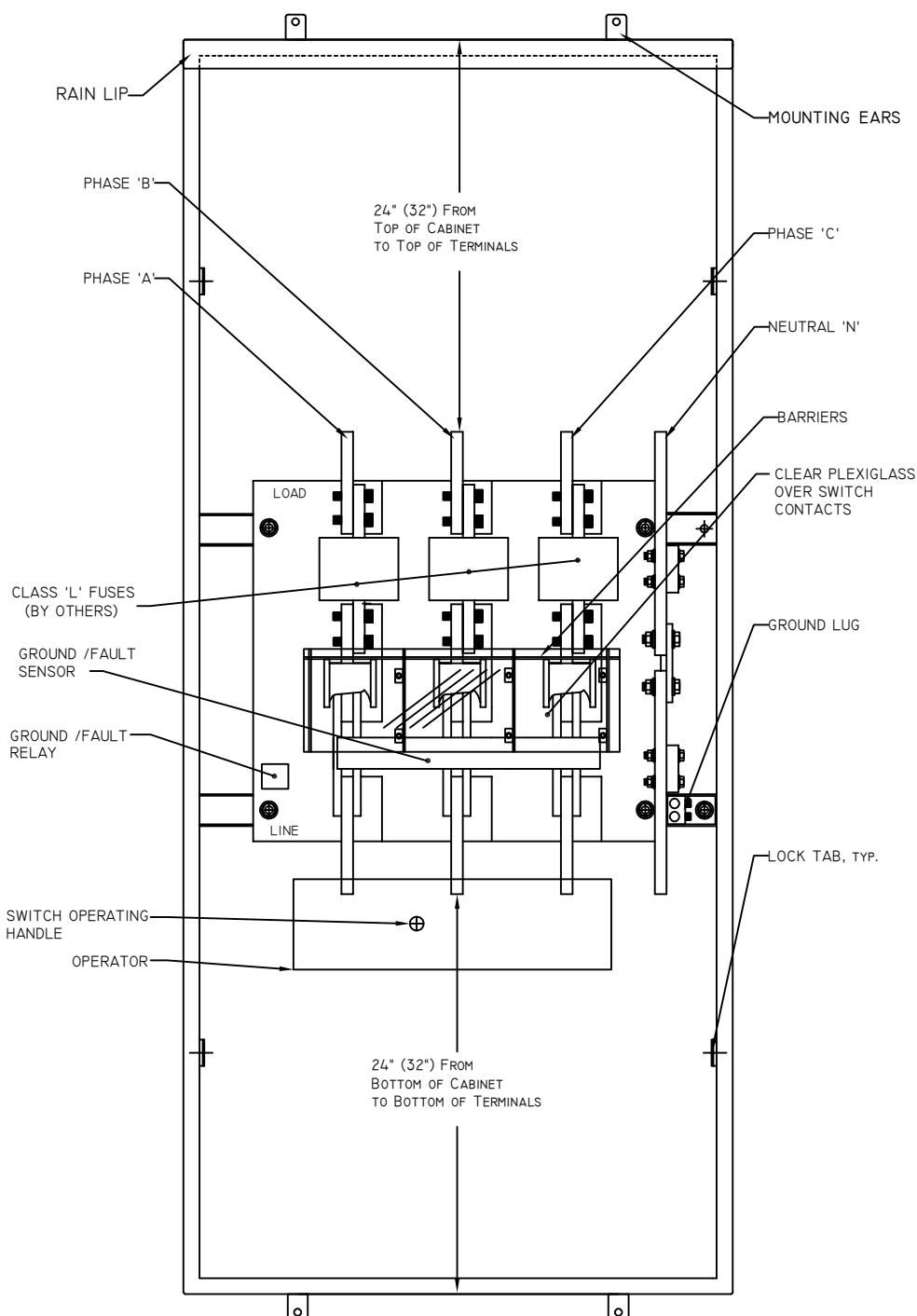
DWG. TITLE:	Bolted Pressure Switch 800-4000 Amps
DWG. NO.:	BPS COVER WM 3R BF
MATERIAL:	12 Ga. ASTM A653 Galvannealed - G60-U
FINISH:	Powder Coated ANSI 61

NOTICE: THIS INFORMATION IS THE PROPERTY OF N.J. SULLIVAN CO., ANY REPRODUCTION, PUBLICATION OR DISTRIBUTION TO A THIRD PARTY IS STRICTLY FORBIDDEN UNLESS WRITTEN PERMISSIONS ARE GIVEN BY AN AUTHORIZED AGENT OF: N.J. SULLIVAN CO., INC.	
DFTG.:	CD DATE: 10/07/10
CHKR.:	DATE:
REV.:	DB DATE: 04/04/23
REV.:	DATE:
REV.:	DATE:



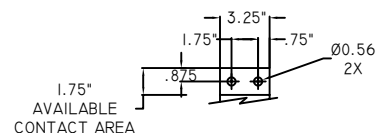
INCORPORATED  
P.O. BOX 438, STERLING, VIRGINIA 20167  
METAL FABRICATION  
Phone: (703)-464-5944 Fax: (703)-464-5992  
www.njsullivan.com

# Bolted Pressure Switch 800-4000 Amp - UL Type 3R Enclosure Wall Mount Bottom Feed

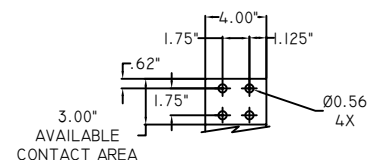


Dimensions shown are for  
800-3000 Amps  
(4000 Amp Dimensions  
shown in Parenthesis)

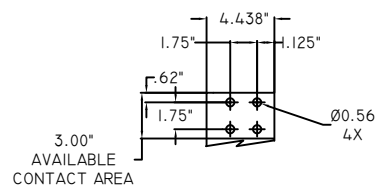
## Terminal Layouts



800 AMP TERMINAL



1200 - 2500 AMP TERMINAL  
4000 AMP TERMINAL



3000 AMP TERMINAL

DWG. TITLE:	Bolted Pressure Switch 800-4000 Amp - UL Type 3R Enclosure
DWG. NO.:	BPS ENCLOSURE WALL MOUNT 3R BF
MATERIAL:	12 Ga. ASTM A653 Galvannealed - G60-U
FINISH:	Powder Coated ANSI 61

NOTICE: THIS INFORMATION IS THE PROPERTY OF N.J. SULLIVAN CO., ANY REPRODUCTION, PUBLICATION OR DISTRIBUTION TO A THIRD PARTY IS STRICTLY FORBIDDEN UNLESS WRITTEN PERMISSIONS ARE GIVEN BY AN AUTHORIZED AGENT OF: N.J. SULLIVAN CO., INC.	
DFTG.:	CD DATE: 10/07/10
CHKR.:	DATE:
REV.:	DB DATE: 04/04/23
REV.:	DATE:
REV.:	DATE:



INCORPORATED  
P.O. BOX 438, STERLING, VIRGINIA 20167  
METAL FABRICATION  
Phone: (703)-464-5944 Fax: (703)-464-5992  
www.njsullivan.com